

# SpecView HMI Software from Watlow®

## Easy-to-Use HMI Software Saves Time by Creating Useful Interfaces in Minutes

SpecView from Watlow® is an easy-to-use human machine interface (HMI) solution for providing a cost effective user interface to Watlow controllers including the EZ-ZONE® integrated controllers and third-party products. Using SpecView HMI software from Watlow means getting a single point of support for hardware, software and application questions. The software has many beneficial features in addition to being price competitive compared to third-party options.

SpecView from Watlow is a commercially accepted and proven product with years of customer-suggested and field-proven features and functionality. This software saves set-up time compared to tag-based systems because it has built-in support and auto-detect for Watlow controllers. The user does not need to learn the intricate details of communications protocols to configure the software thus decreasing set-up time.

Process adjustments and machine troubleshooting are more easily accomplished with graphed data on trend charts. SpecView from Watlow was designed for industrial users' needs providing compatibility with bar code readers and touch screens. Errors are reduced for any process by customizing displays for specific application needs. The software provides flexibility in data logging, a historical replay option, easy-to-use recipe features and remote access options.

Customers who wish to try before they buy can download SpecView from Watlow and run the software in the time-limited demo mode.

Watlow® and EZ-ZONE® are registered trademarks of Watlow Electric Manufacturing Company.

Excel® is a registered trademark of the Microsoft Corporation.

©2008, 2009 Watlow Electric Manufacturing Company all rights reserved.



### Features and Benefits

#### Watlow EZ-ZONE® Standard Bus communications protocol

- Communicates with any EZ-ZONE product without need to purchase a communications option

#### Built-in support and auto-detect for controllers

- Saves set-up time
- Eliminates need to learn communications protocols
- Integrates devices from multiple vendors

#### Flexible data logging and report generator

- Helps users comply with regulatory requirements including AMS 2750D NADCAP
- Reduces labor and increases accuracy by automating data collection for chosen parameters
- Adds data acquisition to existing processes
- Saves time by exporting data to Excel®-compatible spreadsheet files
- Allows data to be grouped in user-defined batches
- Incorporates measurements, operator comments and other information into reports
- Records operator actions

#### Easy-to-build, customizable screens

- Allows simple custom screen editing
- Simplifies monitoring and adjusting controller parameters
- Reduces errors by making displays application-specific
- Decreases training time
- Integrates sophisticated third-party elements with ActiveX container option
- Automates many tasks with user-defined buttons
- Calls attention to specific parameter values with user-set color dynamics
- Allows touch screen compatibility
- Provides bar graphs for 'at-a-glance' monitoring
- Limits access with passwords if desired



## Features and Benefits (Continued)

### Alarm manager

- Simplifies understanding alarms with customizable, plain-text messages
- Aids in troubleshooting by time stamping and logging alarms

### Easy-to-use recipe manager

- Saves snapshot of current process values
- Reproduces previous machine setups exactly
- Reviews and edits complex programmer profiles
- Eliminates operator error in setting machine parameters

### Remote access option

- Allows multiple operator stations with identical interfaces for convenient access
- Provides multiple password-protection levels
- Improves access over LAN, modem or internet
- Reduces maintenance and repair downtime
- Increases utilization

## SpecView from Watlow System Requirements

### Compatible Operating Systems:

- Windows® Vista (all versions)
- Windows® Server 2003
- Windows® XP (Home and Professional)
- Windows® 2000 (Workstation and Professional)
- Windows® NT 4.0
- Windows® ME
- Windows® 98
- Windows® 95 (help not supported)

### Minimum System:

- Pentium® processor or equivalent Celeron® or AMD
- 64MB RAM (128MB or more recommended)
- 30MB hard disk space to install SpecView from Watlow
- Additional disk space for data logging
- Instrument connection: RS232/RS485/RS422/  
Ethernet/OPC
- USB port for the key

### Ideal System:

- Pentium® 4 (or Celeron® or AMD equivalent) 2.0Ghz
- 256MB RAM
- 80GB hard disk

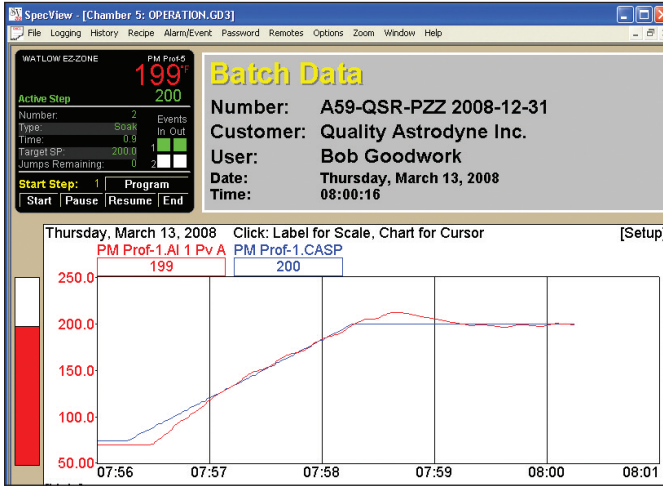
## Supported Controllers and Protocols

| Controller's Communication Protocol | Standard Bus | Modbus® RTU | Modbus® TCP | Standard Bus via Modbus® TCP or Modbus® RTU EZ-ZONE RUI Gateway |
|-------------------------------------|--------------|-------------|-------------|---|
| <b>EZ-ZONE PM</b>                   | ✓            | ①           | ①           | ①   |
| <b>EZ-ZONE RM</b>                   | ✓            | N/A         | N/A         | N/A   |
| <b>EZ-ZONE ST</b>                   | ✓            | ①           | N/A         | ①   |
| <b>SERIES F4 Ramping</b>            | N/A          | ✓           | N/A         | N/A   |
| <b>SERIES 96, 97, SD</b>            | N/A          | ✓           | N/A         | N/A   |
| <b>POWER SERIES</b>                 | N/A          | ✓           | N/A         | N/A   |
| <b>MICRODIN</b>                     | N/A          | ✓           | N/A         | N/A   |
| <b>SERIES 986, 987, 988, 989</b>    | N/A          | ✓           | N/A         | N/A   |
| <b>CLS200 (standard firmware)</b>   | N/A          | ✓           | N/A         | N/A   |
| <b>MLS300 (standard firmware)</b>   | N/A          | ✓           | N/A         | N/A   |

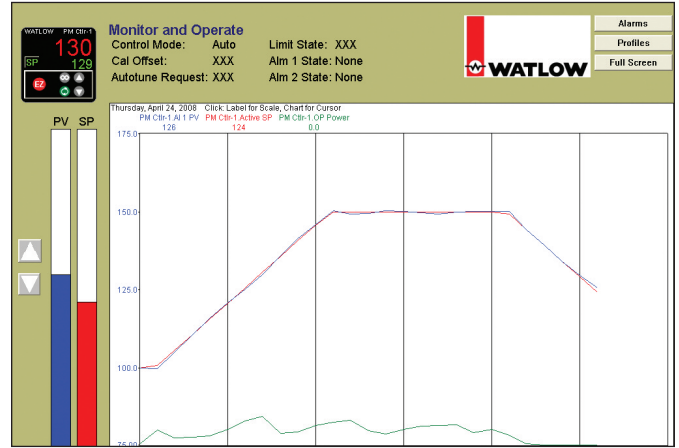
① Modbus® support was designed for EZ-ZONE PM firmware versions 4.0 and earlier and EZ-ZONE ST firmware versions 2.0 and earlier. Features introduced in later versions are not included.

## How to Choose the Correct SpecView from Watlow Options

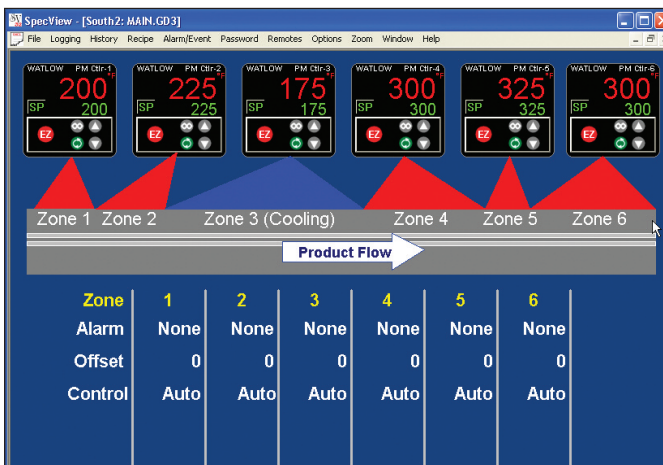
| Order this option....              | If you want to....  |
|------------------------------------|---|
| <b>Mini Version</b>                | Operate a system with data from one or two simple instruments. This option includes historical replay and allows up to two instruments. Note that in some cases because devices such as profiling and multi-loop controllers are represented by more than one instrument, the mini version may not be appropriate.          |
| <b>Standard Version</b>            | Be free to expand configurations beyond the two instrument limit of the mini version.   |
| <b>Single Port</b>                 | Communicate with instruments on only one serial communications port or only via Ethernet.   |
| <b>Multiple Port</b>               | Communicate with instruments on more than one serial communications port and via Ethernet.  |
| <b>Historical Replay</b>           | Replay logged data on screens in trends, bar graphs and numeric fields. Without the option replay is limited to the last four hours of data.  |
| <b>Strategy Controller</b>         | Configure SpecView from Watlow to respond automatically to <i>events</i> such as specific parameter values with <i>actions</i> such as printing the screen, starting logging or downloading a recipe. Events can also be time or calendar based. Without the strategy controller option you are limited to two such events. |
| <b>DDE</b>                         | Integrate SpecView from Watlow with other Windows® programs.  |
| <b>OPC Client</b>                  | Connect SpecView from Watlow to instruments via an OPC server.  |
| <b>ActiveX Container</b>           | Integrate third-party or customer-written ActiveX controls into SpecView from Watlow.   |
| <b>Remote Users</b>                | Monitor instruments from multiple computers at one time. Order the number of remote users corresponding to the maximum number of additional computers you want to connect simultaneously.   |
| <b>SERIES F4 Programmer Driver</b> | Use the computer to manage profiles: program profiles in the computer, save profiles on the computer, or download profiles that are saved on the computer to the SERIES F4.   |
| <b>Allen-Bradley® DF1 Driver</b>   | Connect to Allen-Bradley® PLCs that support the DF1 protocol  |



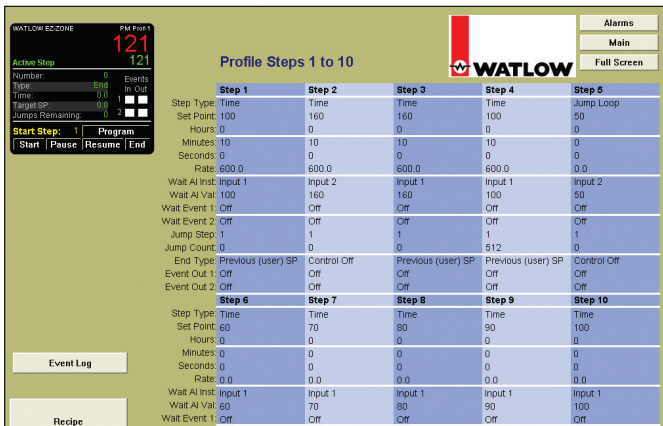
Track and report batch-specific processing data.



Graph and log process data. Replay data that may have been missed while a user was away. For playback of data older than four hours get the historical replay option.



Create application-specific screens that depict process data so users can relate.



Make screens with most often used parameters. Enable recipe management to reduce operator errors when setting values.

## SpecView from Watlow - Standard

### Ordering Information

To order, complete the code number with the information below.

S V S - - - - - 0 0

#### Version

S = Standard

#### Ports

S = Single  
M = Multiple

#### Historical Replay and Strategy Controller

0 = None  
H = Historical replay  
S = Strategy controller  
B = Both

#### DDE and OPC

0 = None  
D = DDE  
C = OPC client  
B = Both

#### ActiveX Container

0 = None  
A = ActiveX container

#### Remote Users

00 = None  
XX = Number of simultaneous remote users (01 to 99)

#### Special Watlow Drivers

0 = None  
1 = SERIES F4 programmer

#### Third Party Drivers<sup>①</sup>

0 = None  
1 = Allen-Bradley® DF1 (AB)

<sup>①</sup> Special drivers for other third-party products (Honeywell, Eurotherm, Yokogawa and Marathon) are available directly from SpecView.

## SpecView from Watlow - Mini

### Ordering Information

To order, complete the code number with the information below.

S V M - - - - 0 0

**Version** \_\_\_\_\_  
M = Mini (limited to two instrument views)<sup>①</sup>

**Ports** \_\_\_\_\_  
S = Single  
M = Multiple

**Historical Replay and Strategy Controller** \_\_\_\_\_  
H = Historical replay  
B = Historical replay and strategy controller

**DDE and OPC** \_\_\_\_\_  
0 = None  
D = DDE  
C = OPC client  
B = Both

**ActiveX Container** \_\_\_\_\_  
0 = None  
A = ActiveX container

**Remote Users** \_\_\_\_\_  
00 = None  
XX = Number of simultaneous remote users (01 to 99)

**Special Watlow Drivers** \_\_\_\_\_  
0 = None  
1 = SERIES F4 programmer

**Third Party Drivers**<sup>②</sup> \_\_\_\_\_  
0 = None  
1 = Allen-Bradley® DF1 (AB)

<sup>①</sup> Because the mini version is limited to two instrument views, it may not be appropriate for use with some devices such as profiling and multi-loop controllers where a single device appears as multiple instruments in SpecView.

<sup>②</sup> Special drivers for other third-party products (Honeywell, Eurotherm, Yokogawa and Marathon) are available directly from SpecView.

### Your Authorized Watlow Distributor Is:

## SpecView from Watlow - Upgrade

### Ordering Information

To order, complete the code number with the information below.<sup>①</sup>

S V - - - - 0 0

**Version Upgrade** \_\_\_\_\_  
U = No version change; upgrade options only  
N = Upgrade mini to standard

**Ports** \_\_\_\_\_  
0 = No upgrade  
M = Multiple

**Historical Replay and Strategy Controller**<sup>②</sup> \_\_\_\_\_  
0 = No upgrade  
H = Historical replay (already included with SpecView Mini)  
S = Strategy controller  
B = Both (do not order this option for SpecView Mini)

**DDE and OPC** \_\_\_\_\_  
0 = No upgrade  
D = DDE  
C = OPC client  
B = Both

**ActiveX Container** \_\_\_\_\_  
0 = No upgrade  
A = ActiveX container

**Remote Users** \_\_\_\_\_  
00 = No upgrade  
XX = Add this number of simultaneous remote users (01 to 99)

**Special Watlow Drivers** \_\_\_\_\_  
0 = No upgrade  
1 = SERIES F4 programmer

**Third Party Drivers**<sup>③</sup> \_\_\_\_\_  
0 = No upgrade  
1 = Allen-Bradley® DF1 (AB)

<sup>①</sup> Your upgrade order must be accompanied by the Step 1 code from the Upgrade screen in SpecView from Watlow. Use the upgrade order form available at [www.watlow.com](http://www.watlow.com) or upon request from Watlow or your authorized distributor.

<sup>②</sup> If you are ungrading a SpecView Mini version to add strategy controller, order it with option "S". Do not order option "B", as Mini already includes historical replay.

<sup>③</sup> Special drivers for other third-party products (Honeywell, Eurotherm, Yokogawa and Marathon) are available directly from SpecView.

To be automatically connected to the nearest North American Technical Sales Office:

**1-800-WATLOW2 • [www.watlow.com](http://www.watlow.com) • [info@watlow.com](mailto:info@watlow.com)**

**International Technical Sales Offices:** Australia, +61-3-9335-6449 • China, +86-21-3381-0188 • France, +33 1 4132 7970  
Germany, +49 (0) 7253-9400-0 • Italy, +39 (0) 2 458-8841 • Japan, +81-3-3518-6630 • Korea, +82-2-2628-5770  
Malaysia, +60-3-8076-8745 • Mexico, +52 (442) 217-6235 • Singapore, +65-6773-9488 • Spain, +34 91 675 1292  
Taiwan, +886-7-288-5168 • United Kingdom, +44 (0) 115-964-0777