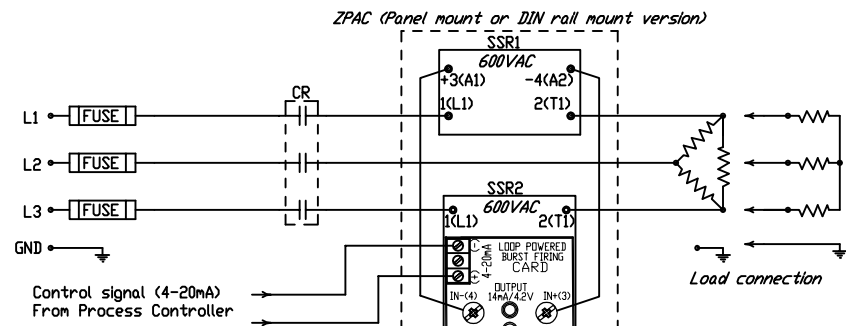
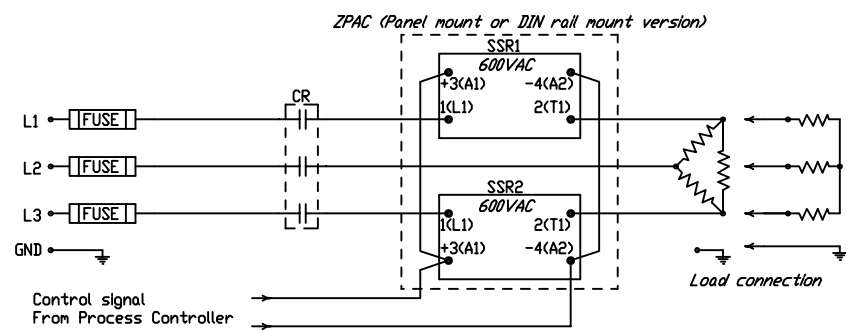
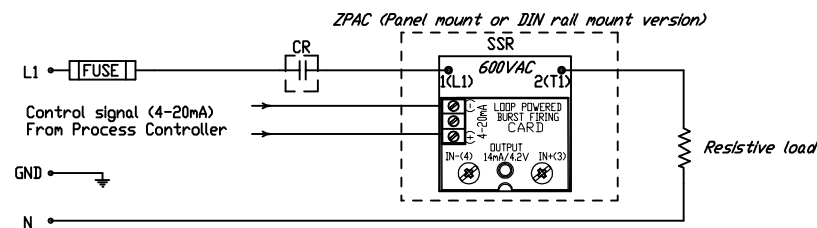
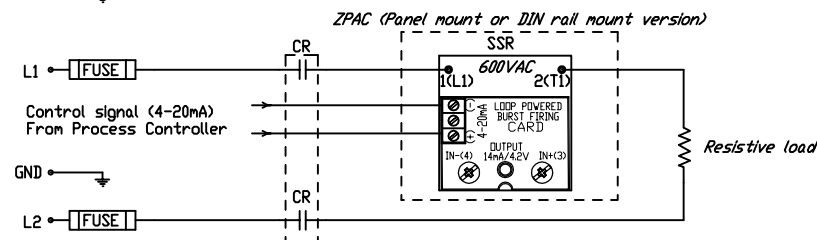
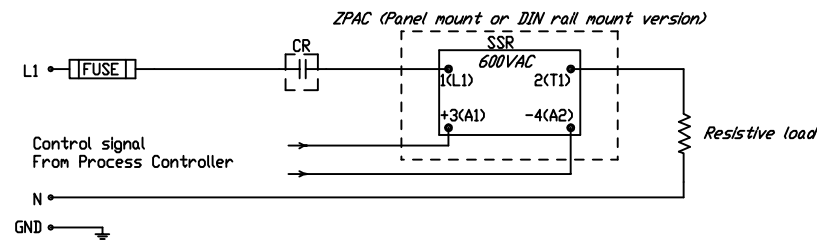
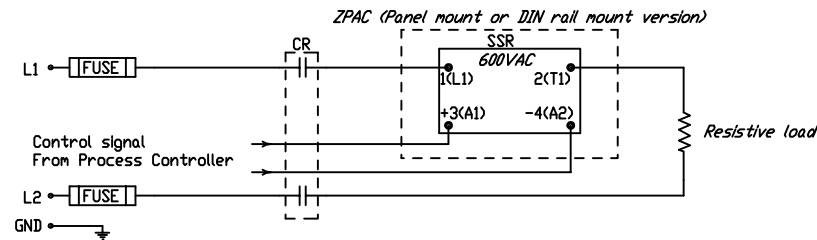


TYPICAL WIRING OF 3-PHASE, 2-CONTROLLED LEG ZPAC

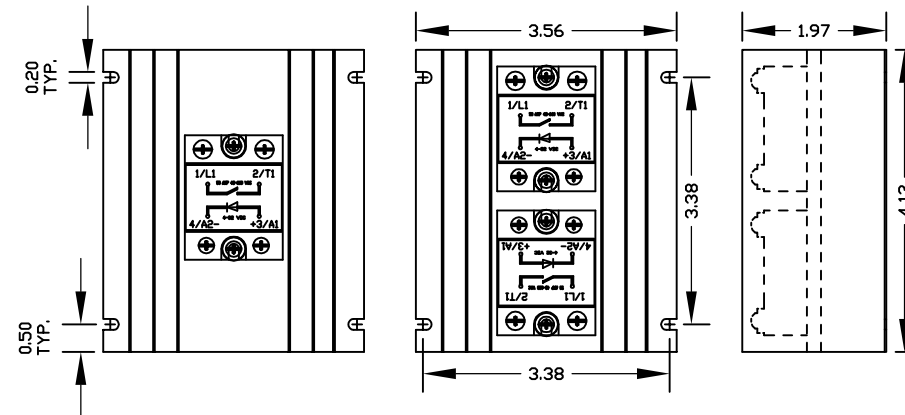


Note: Two single-phase ZPACs can be configured as a 3-phase 2 leg Power controller by combining identical units.

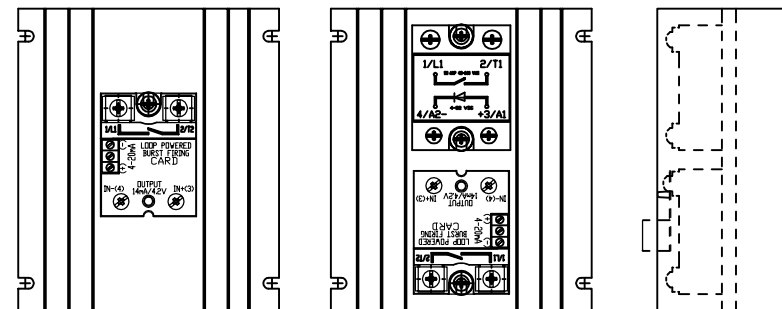
TYPICAL WIRING OF SINGLE PHASE ZPAC



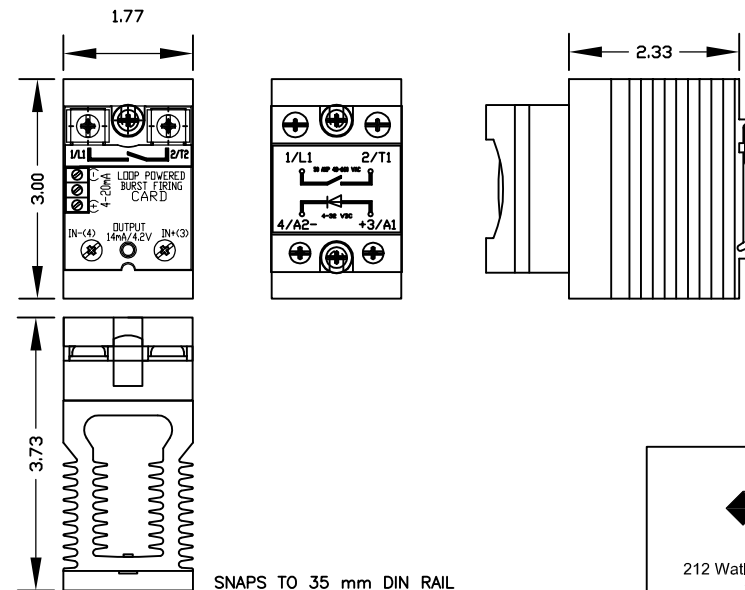
PANEL MOUNT ZPAC



PANEL MOUNT ZPAC C/W BURST FIRING CARD



DIN RAIL MOUNT ZPAC WITH AND WITHOUT BURST FIRING CARD



**WARNING!**  
MOUNT THE ZPAC COOLING FINS VERTICALLY. DO NOT BLOCK OR IMPEDE THE NATURAL CONVECTION FLOW THROUGH THE FINS.  
ALL WIRING MUST CONFORM TO CSA/UL AND OR ANY LOCAL ELECTRICAL CODES.

The ZPAC (Solid State Relay Power Controller Assembly) is an electronic switching device. This device switches Power (Current) to a load circuit when an external DC or AC control signal is applied across its terminals.

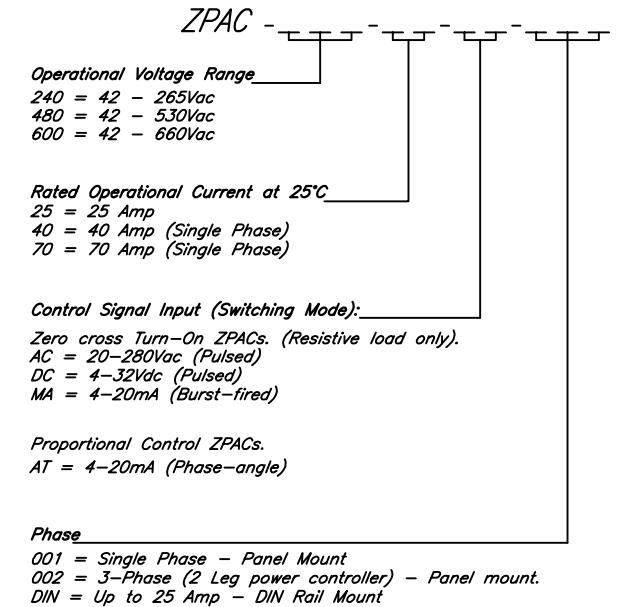
Why use a ZPAC?  
Long life, quiet operation, low power consumption, shock and vibration resistant, high compatibility with control systems, fast switching, etc.

ZPAC applications:  
Although there are literally thousands of individual uses for a ZPAC, Heating Control encompasses the largest segment of applications.

- GENERAL SPECIFICATIONS**
- Operational voltage range 120Vac to 600Vac rms
  - Amperage rating @ 25°C (See ordering information)
  - Operating temperature range -20° to 70°C
  - Storage temperature range -40°C to +85°C
  - Operational frequency range 45 to 65Hz
- Operator interface**
- Command signal input indication light
- Control signal terminals**
- Mounting screws M3 x 9, torque 0.5Nm, or Mounting screws 6-32 x 1/4", torque 20inLbs.
- Line, Load terminals**
- Mounting screws M5 x 9, torque 2.4Nm or Mounting screws 10-32 x 1/4", torque 20inLbs.
- Back panel mount**
- Four mounting holes M4 or #8 fasteners
- DIN rail mount**
- DIN EN 50022, 35.3mm x 7.5 mm slotted DIN rail
- Dimensions are in inches

Specifications are subject to change without notice.

ORDERING INFORMATION:



**ZESTA**

212 Watline Ave. Mississauga, Ontario, Canada. L4Z1P4  
Offices: Calgary, Coquitlam, St. Laurent  
www.zesta.com 1 800 755 5418 Fax 905 568 3131

NOTICE TO PERSONS RECEIVING THIS DRAWING  
ZESTA ENGINEERING LTD. OF MISSISSAUGA ONTARIO CLAIMS PROPRIETARY RIGHTS TO THE MATERIAL HEREIN DISCLOSED. IT IS SUPPLIED IN CONFIDENCE WITHOUT PREJUDICE TO ANY PATENT RIGHTS OF ZESTA ENGINEERING AND MAY NOT BE REPRODUCED OR USED TO MANUFACTURE ANYTHING SHOWN THEREIN WITHOUT ZESTA ENGINEERING'S WRITTEN PERMISSION

|  |                          |  |                              |
|--|--------------------------|--|------------------------------|
| CUSTOMER:<br><b>SOLID STATE RELAY POWER CONTROLLERS</b>                        |                          |  |                              |
| PROJECT NAME/DESCRIPTION:<br><b>ZPAC (ZESTA SSR POWER CONTROLLER ASSEMBLY)</b> |                          |  |                              |
| PROJECT/MODEL NUMBER:<br><b>ZPAC</b>   | SIZE:<br><b>B</b>        | Unless otherwise specified:<br>Dimensions are in inches.           |                              |
| DRAWING NUMBER:<br><b>ZPAC-15/02</b>   | REVISION:<br><b>4.1</b>  | Tolerances:<br>X.X=±0.1 Angles=±0.5°<br>X.XX=±0.03<br>X.XXX=±0.005 |                              |
| DRAWN BY:<br><b>RO</b>   | CHECKED BY:<br><b>SL</b> | SCALE:<br><b>N/A</b>   | DATE:<br><b>Aug 18, 2017</b> |
| SHEET NUMBER:<br><b>01 OF 01</b>   |                          |  |                              |